

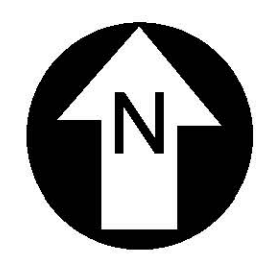
ANSI D CADD Drawing. DO NOT REVISE MANUALLY.

PLAN	SURVEYED	REVIEWED	DATE
NOTEBOOK NO.	ROW	CHKD	

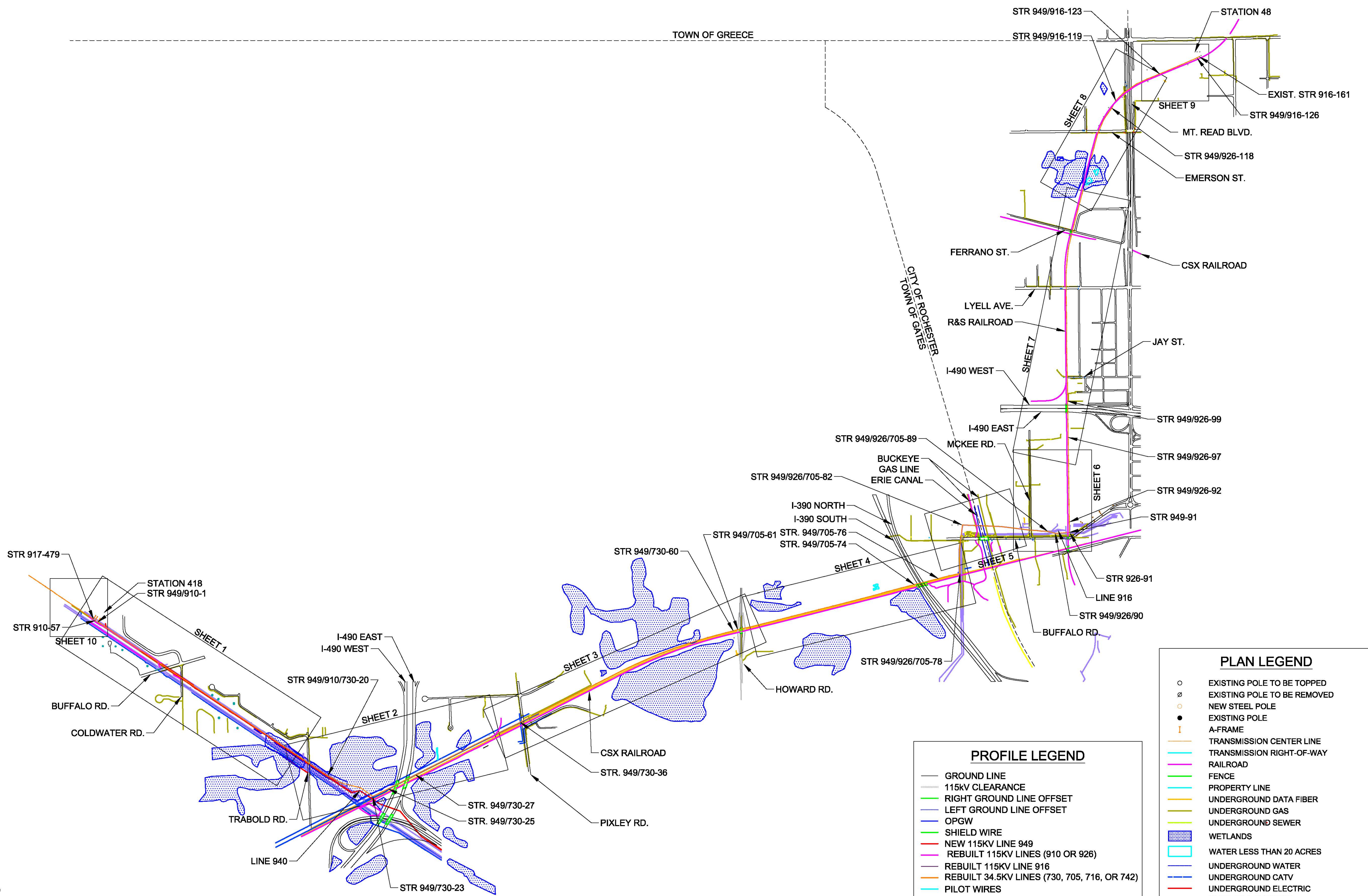
PROFILE	SURVEYED	REVIEWED	DATE
NOTEBOOK NO.	NOTES REDUCED		

ROCHESTER (CENTRAL) DISTRICT - WESTERN MONROE REGION

This document and any attachments are considered:
BUSINESS CONFIDENTIAL
PROTECTED CRITICAL INFRASTRUCTURE INFORMATION



SCALE:
0' 500' 1000'



—	GROUND LINE
---	115kV CLEARANCE
---	RIGHT GROUND LINE OFFSET
---	LEFT GROUND LINE OFFSET
---	OPGW
---	SHIELD WIRE
---	NEW 115KV LINE 949
---	REBUILT 115KV LINES (910 OR 926)
---	REBUILT 115KV LINE 916
---	REBUILT 34.5KV LINES (730, 705, 716, OR 742)
---	PILOT WIRES
---	REBUILT 4KV LINES (359 OR 2502) AND ASSOCIATED NEUTRAL

○	EXISTING POLE TO BE TOPPED
∅	EXISTING POLE TO BE REMOVED
○	NEW STEEL POLE
●	EXISTING POLE
I	A-FRAME
---	TRANSMISSION CENTER LINE
---	TRANSMISSION RIGHT-OF-WAY
---	RAILROAD
---	FENCE
---	PROPERTY LINE
---	UNDERGROUND DATA FIBER
---	UNDERGROUND GAS
---	UNDERGROUND SEWER
---	WETLANDS
---	WATER LESS THAN 20 ACRES
---	UNDERGROUND WATER
---	UNDERGROUND CATV
---	UNDERGROUND ELECTRIC
---	OVERHEAD ELECTRIC
---	MUNICIPAL BOUNDARY LINE

UNDERBUILD CONSTRUCTION TYPE	NEUTRAL CONDUCTOR TYPE	OHSW TYPE	CONDUCTOR TYPE	YR. CONST.	WO	PE Stamp
TENSION	TENSION	TENSION	TENSION	NOTES:		
DESIGN TEMP.	DESIGN TEMP.	DESIGN TEMP.	DESIGN TEMP.	REV.	DATE	BY
						DESCRIPTION
						APP.

REV.	DATE	BY	DESCRIPTION	APP.

AVANGRID ENGINEERING			
CONFIDENTIAL, PROPRIETARY and TRADE SECRET INFORMATION			
Property of AVANGRID			
DR.	ASW	SCALE	AS SHOWN
CK.	MSP	FILE:	R0001-T949-000A.DWG
APP.		NO.	
REV.	DATE	BY	DESCRIPTION
0-0C	10/18/19	MLEC	ISSUE FOR APPROVAL
0-0B	9/18/19	MLEC	ISSUE FOR REVIEW
0-0A	4/29/19	MLEC	ISSUE FOR REVIEW
REV.	DATE	BY	DESCRIPTION

LINE 949	
OVERVIEW / KEY SHEET DRAWING	
115KV LINE 949	
DR.	ASW
CK.	MSP
APP.	
DATE:	4/29/19
NO.	R0001-T949-000A
REV.	0-0C

ANSI D CADD Drawing, DO NOT REVISE MANUALLY.

PLAN	SURVEYED	BY	DATE
NOTEBOOK NO.	REVIEWED		
ROW CHKD			

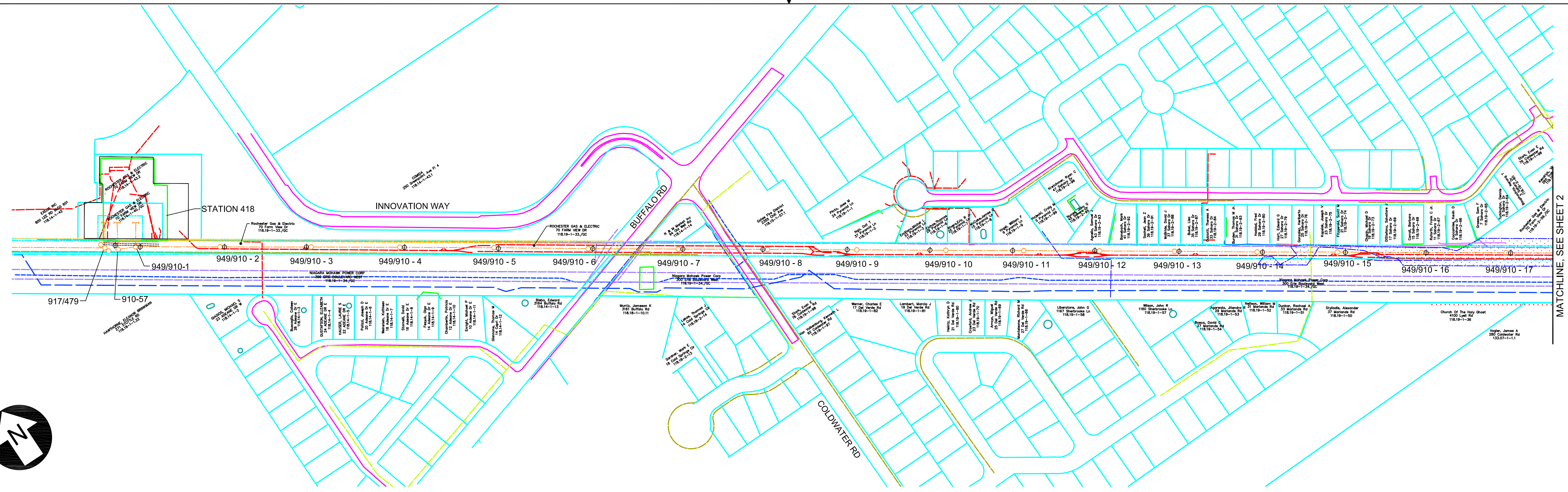
PLAN SCALE:
1" = 200'

PROFILE	SURVEYED	BY	DATE
NOTEBOOK NO.	REVIEWED		
NOTES REDUCED			

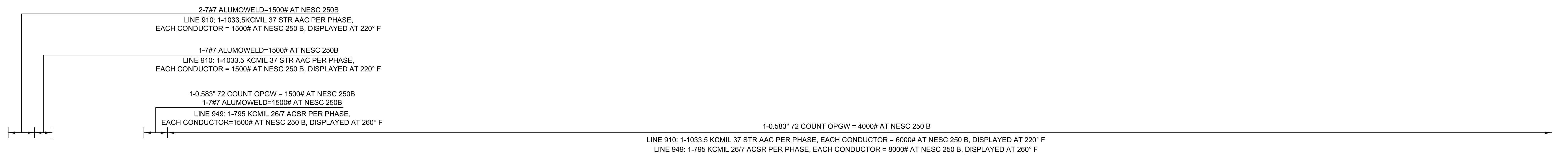
PROFILE SCALE:
HORIZ. 1" = 200'
VERT. 1" = 40'

ROCHESTER (CENTRAL) DISTRICT - WESTERN MONROE REGION

This document and any attachments are considered:
BUSINESS CONFIDENTIAL
PROTECTED CRITICAL INFRASTRUCTURE INFORMATION

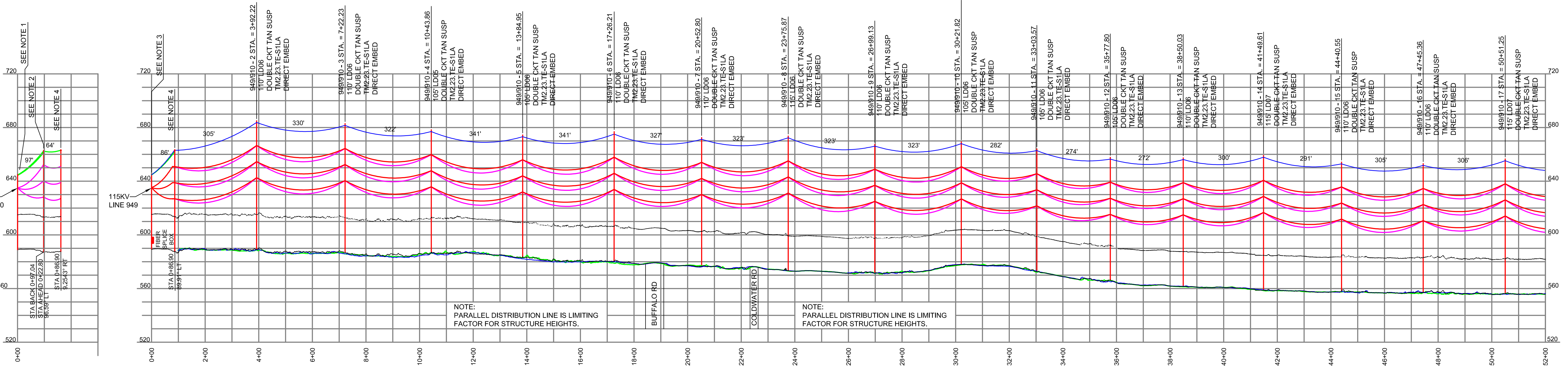


MATCHLINE, SEE SHEET 2



PROFILE NOTES:

- 910 FRAME - STATION 418
STA=0+00.00
- 910 - 57 STA BACK = 0+97.04
STA AHEAD = 0+22.80
75' AGH
SINGLE CKT VERT DE
TM2.23.TE-S1NP
CONCRETE FND
- 949 FRAME - STATION 418
STA=0+00.00
- 949/910 - 1 STA = 0+86.90
75' AGH
DOUBLE CKT DE ON ARMS
TM2.23.TE-S1NP
CONCRETE FND



NOTE: PARALLEL DISTRIBUTION LINE IS LIMITING FACTOR FOR STRUCTURE HEIGHTS.

NOTE: PARALLEL DISTRIBUTION LINE IS LIMITING FACTOR FOR STRUCTURE HEIGHTS.

Figure 5-1 Plan and Profile

Rochester Transmission Project Enhancement
Monroe County, NY

OHSW TYPE	VARIES, SEE ABOVE	CONDUCTOR TYPE	VARIES, SEE ABOVE
TENSION	VARIES, SEE ABOVE	TENSION	VARIES, SEE ABOVE
DESIGN TEMP.	120° F	DESIGN TEMP.	VARIES, SEE ABOVE

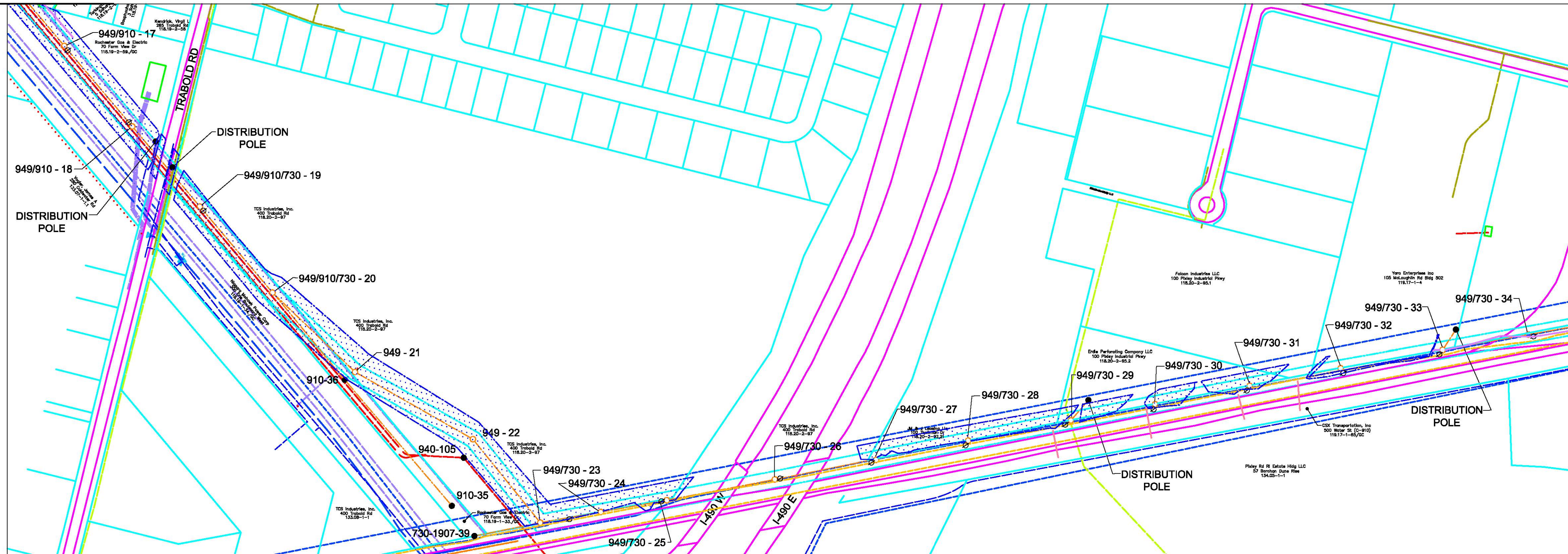
YR. CONST.	W/O	PE Stamp	
NOTES:	1. SEE STRUCTURE LIST AND STRUCTURE FRAMING DRAWINGS FOR ALL HARDWARE ASSEMBLY INFORMATION. 2. SEE DRAWING XXX FOR FURTHER INFORMATION ON CONCRETE FOUNDATIONS.		
REV.	DATE	BY	DESCRIPTION

CONFIDENTIAL, PROPRIETARY and TRADE SECRET INFORMATION			
0-0E	10/18/19	MLEC	ISSUE FOR APPROVAL
0-0D	9/13/19	MLEC	ISSUE FOR REVIEW
0-0C	4/29/19	MLEC	ISSUE FOR APPROVAL
0-0B	3/22/19	MLEC	ISSUE FOR REVIEW
0-0A	1/2/19	MLEC	PRELIMINARY PLAN AND PROFILE
REV.	DATE	BY	DESCRIPTION

RG&E AVANGRID		LINE 949 PLAN AND PROFILE SHEET 1 OF 10 115KV LINE 949	
DR.	ASW	SCALE	AS SHOWN
CK.	MSP	NO.	R0001-T949-001.DWG
APP.			
DATE:	1/2/19		

R0001-T949-001 O-0E

MATCHLINE, SEE SHEET 1

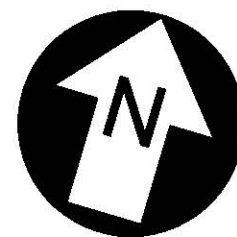


MATCHLINE, SEE SHEET 3

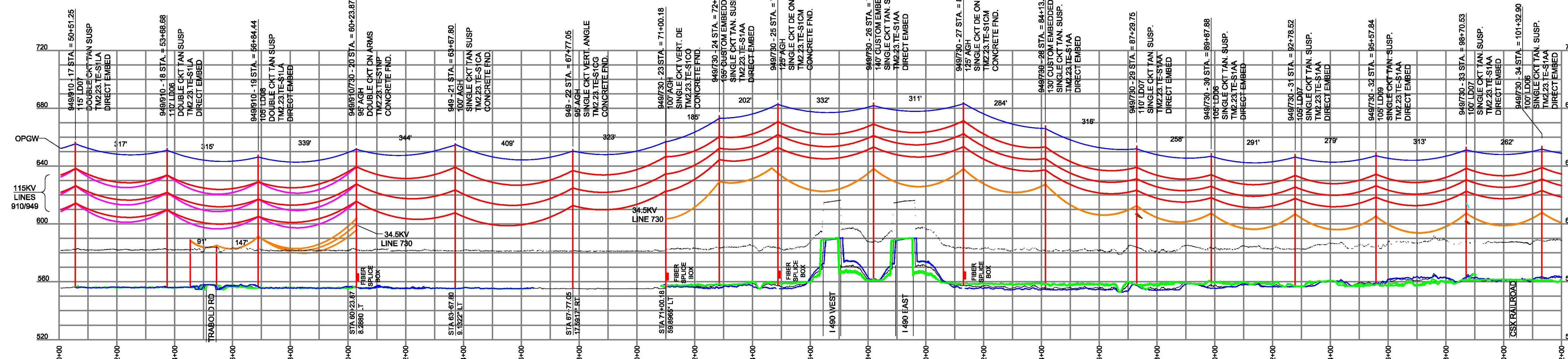
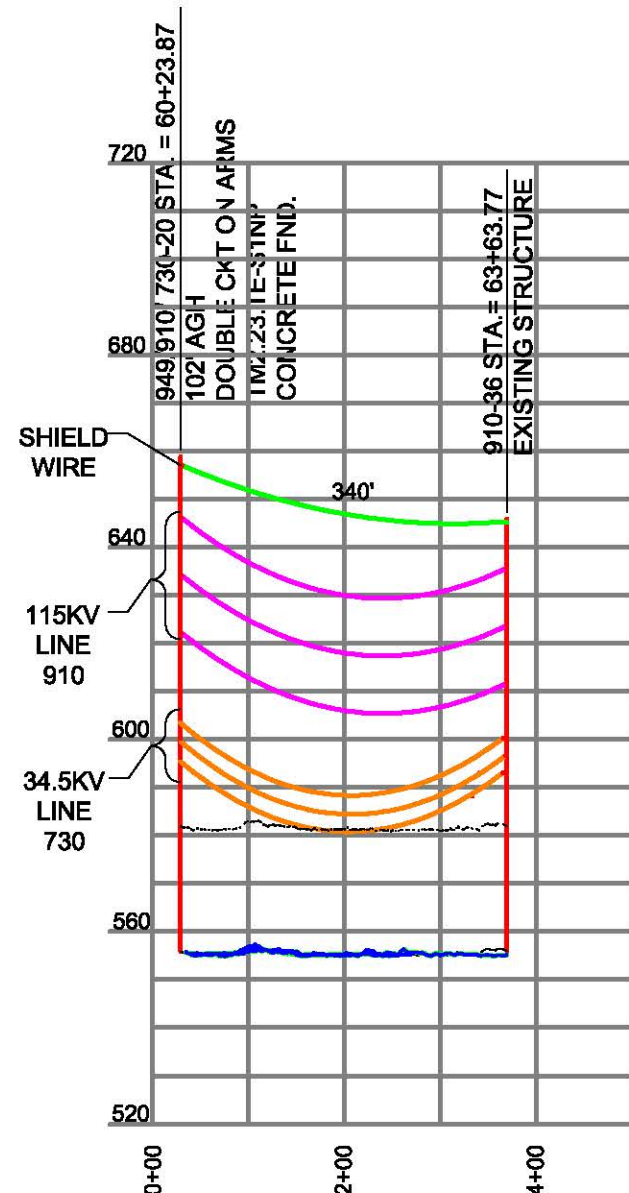
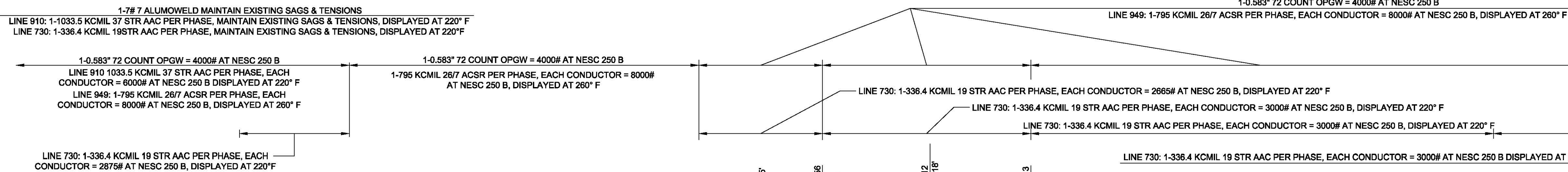
PLAN	SURVEYED	REVIEWED	DATE
NOTEBOOK NO.	ROW	CHKD	

ROCHESTER (CENTRAL) DISTRICT - WESTERN MONROE REGION

PLAN SCALE: 1" = 200'



This document and any attachments are considered: BUSINESS CONFIDENTIAL PROTECTED CRITICAL INFRASTRUCTURE INFORMATION



PROFILE	SURVEYED	REVIEWED	DATE
NOTEBOOK NO.	NOTES REDUCED		

PROFILE SCALE: HORZ. 1" = 200' VERT. 1" = 40'

CADD Drawing. DO NOT REVISE MANUALLY.

UNDERBUILD CONSTRUCTION TYPE	NEUTRAL CONDUCTOR TYPE	OHSW TYPE	CONDUCTOR TYPE
VARIES, SEE ABOVE		VARIES, SEE ABOVE	VARIES, SEE ABOVE
TENSION	TENSION	TENSION	TENSION
VARIES, SEE ABOVE		VARIES, SEE ABOVE	VARIES, SEE ABOVE
DESIGN TEMP.	DESIGN TEMP.	DESIGN TEMP.	DESIGN TEMP.
220° F		120° F	VARIES, SEE ABOVE

YR. CONST.	W/O	PE Stamp		
NOTES:				
1. SEE STRUCTURE LIST AND STRUCTURE FRAMING DRAWINGS FOR ALL HARDWARE ASSEMBLY INFORMATION.				
2. SEE DRAWING XXX FOR FURTHER INFORMATION ON CONCRETE FOUNDATIONS.				
REV.	DATE	BY	DESCRIPTION	APP.

AVANGRID ENGINEERING				
CONFIDENTIAL, PROPRIETARY AND TRADE SECRET INFORMATION				
Property of AVANGRID				
0-0E	10/18/19	MLEC	ISSUE FOR APPROVAL	
0-0D	9/13/19	MLEC	ISSUE FOR REVIEW	
0-0C	4/29/19	MLEC	ISSUE FOR APPROVAL	
0-0B	3/22/19	MLEC	ISSUE FOR REVIEW	
0-0A	1/2/19	MLEC	PRELIMINARY PLAN AND PROFILE	
REV.	DATE	BY	DESCRIPTION	APP.

LINE 949
PLAN AND PROFILE
 SHEET 2 OF 10
115KV LINE 949
 DR. ASW
 CK. MSP
 APP. DATE: 1/2/19
 SCALE: AS SHOWN
 FILE: R0001-T949-002.DWG
R0001-T949-002
 REV. 0-0E

PLAN	SURVEYED	BY	DATE
NOTEBOOK NO.	REVIEWED		
	ROW CHKD		

ROCHESTER (CENTRAL) DISTRICT - WESTERN MONROE REGION

PLAN SCALE:
1" = 200'

This document and any attachments are considered:
BUSINESS CONFIDENTIAL
PROTECTED CRITICAL INFRASTRUCTURE INFORMATION

PROFILE	SURVEYED	BY	DATE
NOTEBOOK NO.	REVIEWED		
	NOTES REDUCED		

PROFILE SCALE:
HORIZ. 1" = 200'
VERT. 1" = 40'

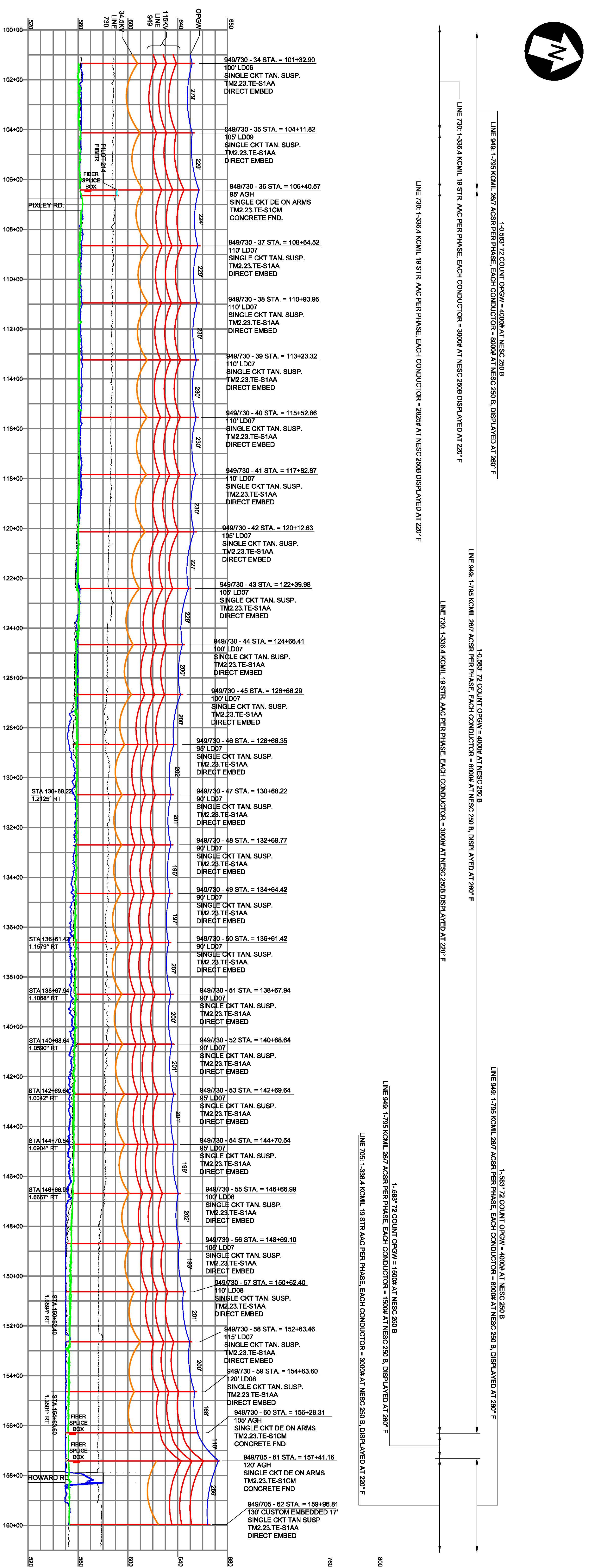
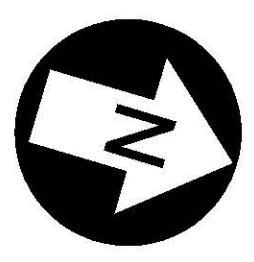
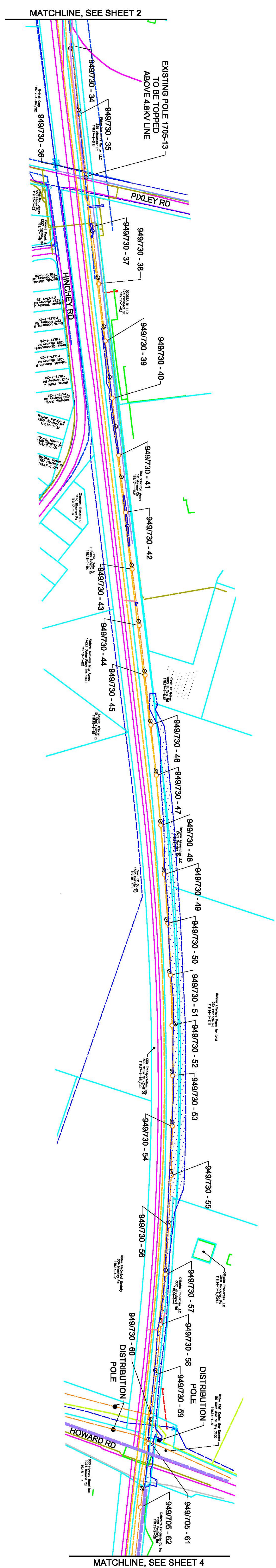


Figure 5-1 Plan and Profile

Rochester Transmission Project Enhancement
Monroe County, NY

CONDUCTOR TYPE	OPGW	115KV LINE	34.5KV LINE	FIBER
TENSION	VARIES, SEE ABOVE			
DESIGN TEMP.	120° F			
CONDUCTOR TYPE	OPGW	115KV LINE	34.5KV LINE	FIBER
TENSION	VARIES, SEE ABOVE			
DESIGN TEMP.	120° F			
REV.	DATE	BY	DESCRIPTION	APP.

REV.	DATE	BY	DESCRIPTION

DATE	10/18/19	MEC	ISSUED FOR APPROVAL
DATE	9/13/19	MEC	ISSUED FOR REVIEW
DATE	4/29/19	MEC	ISSUE FOR APPROVAL
DATE	3/27/19	MEC	ISSUE FOR REVIEW
DATE	12/19	MEC	PRELIMINARY PLAN AND PROFILE

DATE	12/19	APP.	



AVANGRID ENGINEERING
CONFIDENTIAL, PROPRIETARY and TRADE SECRET INFORMATION
Property of AVANGRID

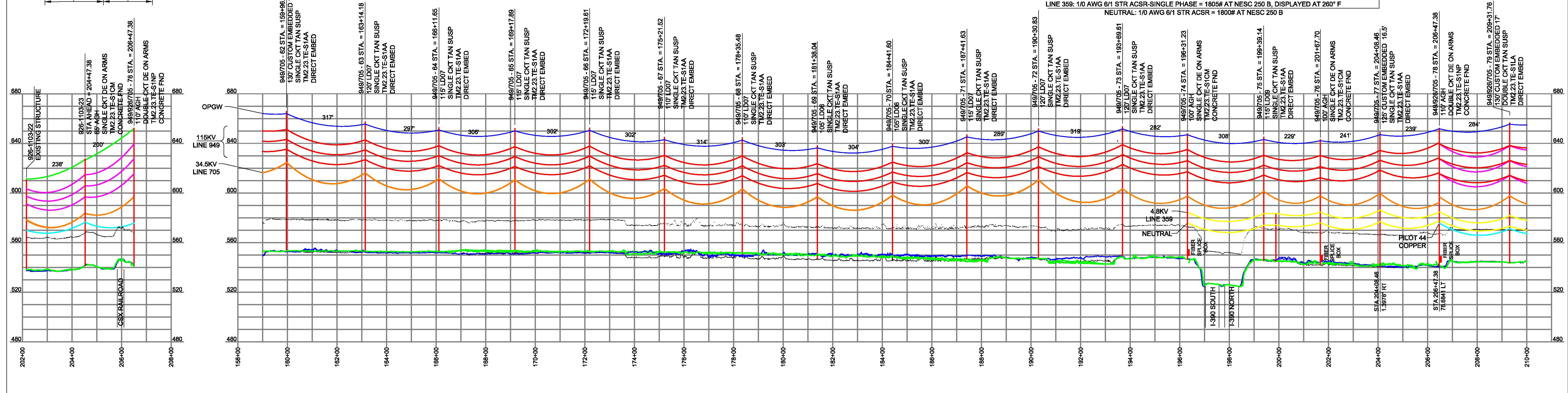
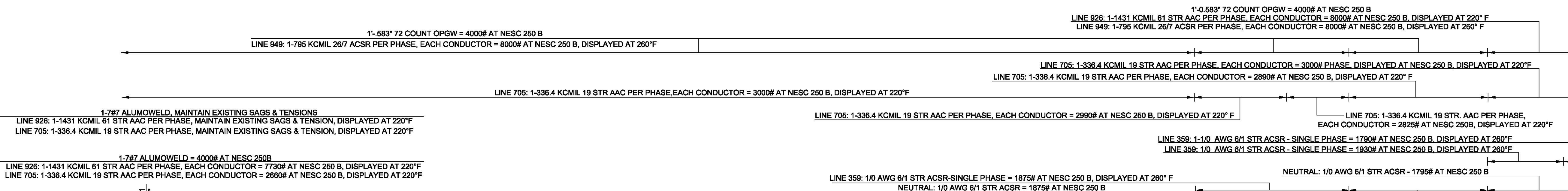
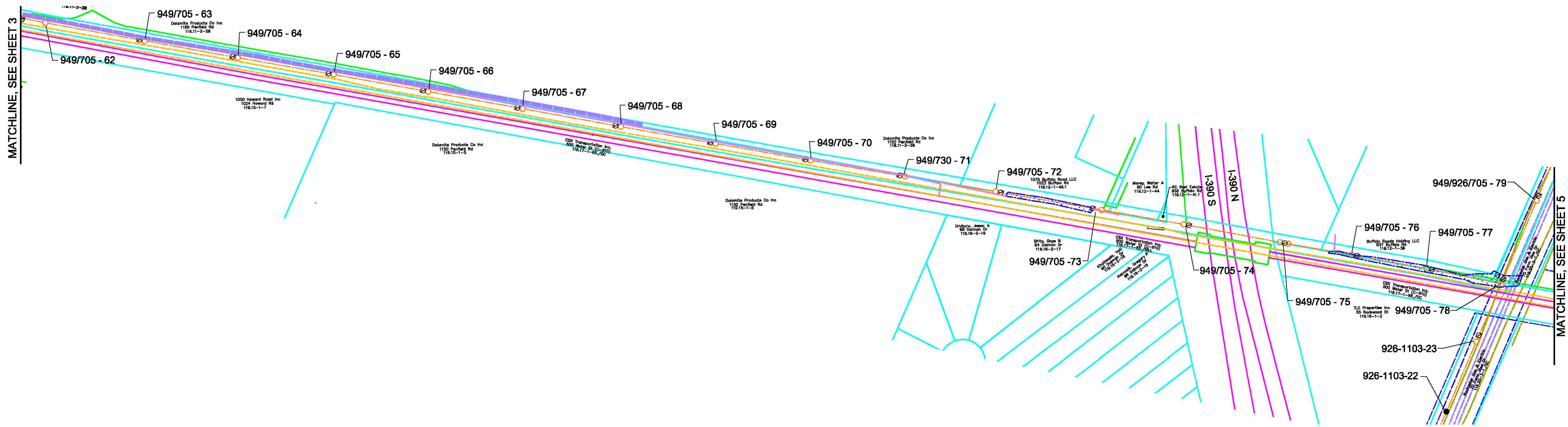
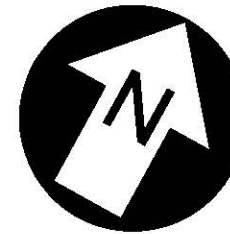
LINE 949
PLAN AND PROFILE
SHEET 3 OF 10
115KV LINE 949
R0001-1949-003

CADD Drawing, DO NOT REVISE MANUALLY.

PLAN	SURVEYED	REVIEWED	DATE
NOTEBOOK NO.	ROW	CHKD	

PLAN SCALE: 1" = 200'

ROCHESTER (CENTRAL) DISTRICT - WESTERN MONROE REGION



PROFILE	SURVEYED	REVIEWED	DATE
NOTEBOOK NO.	NOTES REDUCED		

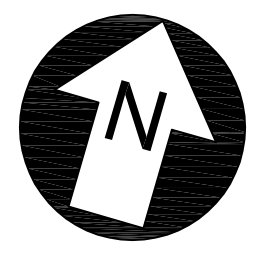
PROFILE SCALE: HORIZ. 1" = 200' VERT. 1" = 40'

UNDERBUILD CONSTRUCTION TYPE VARIES, SEE ABOVE	NEUTRAL CONDUCTOR TYPE VARIES, SEE ABOVE	OHSW TYPE VARIES, SEE ABOVE	CONDUCTOR TYPE VARIES, SEE ABOVE	YR. CONST. W/O	PE Stamp	AVANGRID ENGINEERING CONFIDENTIAL, PROPRIETARY and TRADE SECRET INFORMATION Property of AVANGRID		LINE 949 PLAN AND PROFILE SHEET 4 OF 10 115KV LINE 949																																									
TENSION VARIES, SEE ABOVE	TENSION VARIES, SEE ABOVE	TENSION VARIES, SEE ABOVE	TENSION VARIES, SEE ABOVE	NOTES: 1. SEE STRUCTURE LIST AND STRUCTURE FRAMING DRAWINGS FOR ALL HARDWARE ASSEMBLY INFORMATION. 2. SEE DRAWING XXX FOR FURTHER INFORMATION ON CONCRETE FOUNDATIONS.	<table border="1"> <tr> <th>REV.</th> <th>DATE</th> <th>BY</th> <th>DESCRIPTION</th> <th>APP.</th> </tr> <tr> <td> </td> <td> </td> <td> </td> <td> </td> <td> </td> </tr> </table>			REV.	DATE	BY	DESCRIPTION	APP.						<table border="1"> <tr> <th>REV.</th> <th>DATE</th> <th>BY</th> <th>DESCRIPTION</th> <th>APP.</th> </tr> <tr> <td>0-0E</td> <td>10/18/19</td> <td>MLEC</td> <td>ISSUE FOR APPROVAL</td> <td></td> </tr> <tr> <td>0-0D</td> <td>9/13/19</td> <td>MLEC</td> <td>ISSUE FOR REVIEW</td> <td></td> </tr> <tr> <td>0-0C</td> <td>4/29/19</td> <td>MLEC</td> <td>ISSUE FOR APPROVAL</td> <td></td> </tr> <tr> <td>0-0B</td> <td>3/22/19</td> <td>MLEC</td> <td>ISSUE FOR REVIEW</td> <td></td> </tr> <tr> <td>0-0A</td> <td>1/2/19</td> <td>MLEC</td> <td>PRELIMINARY PLAN AND PROFILE</td> <td></td> </tr> </table>	REV.	DATE	BY	DESCRIPTION	APP.	0-0E	10/18/19	MLEC	ISSUE FOR APPROVAL		0-0D	9/13/19	MLEC	ISSUE FOR REVIEW		0-0C	4/29/19	MLEC	ISSUE FOR APPROVAL		0-0B	3/22/19	MLEC	ISSUE FOR REVIEW		0-0A	1/2/19	MLEC	PRELIMINARY PLAN AND PROFILE		DR. ASW CK. MSP APP. DATE: 1/2/19
REV.	DATE	BY	DESCRIPTION	APP.																																													
REV.	DATE	BY	DESCRIPTION	APP.																																													
0-0E	10/18/19	MLEC	ISSUE FOR APPROVAL																																														
0-0D	9/13/19	MLEC	ISSUE FOR REVIEW																																														
0-0C	4/29/19	MLEC	ISSUE FOR APPROVAL																																														
0-0B	3/22/19	MLEC	ISSUE FOR REVIEW																																														
0-0A	1/2/19	MLEC	PRELIMINARY PLAN AND PROFILE																																														

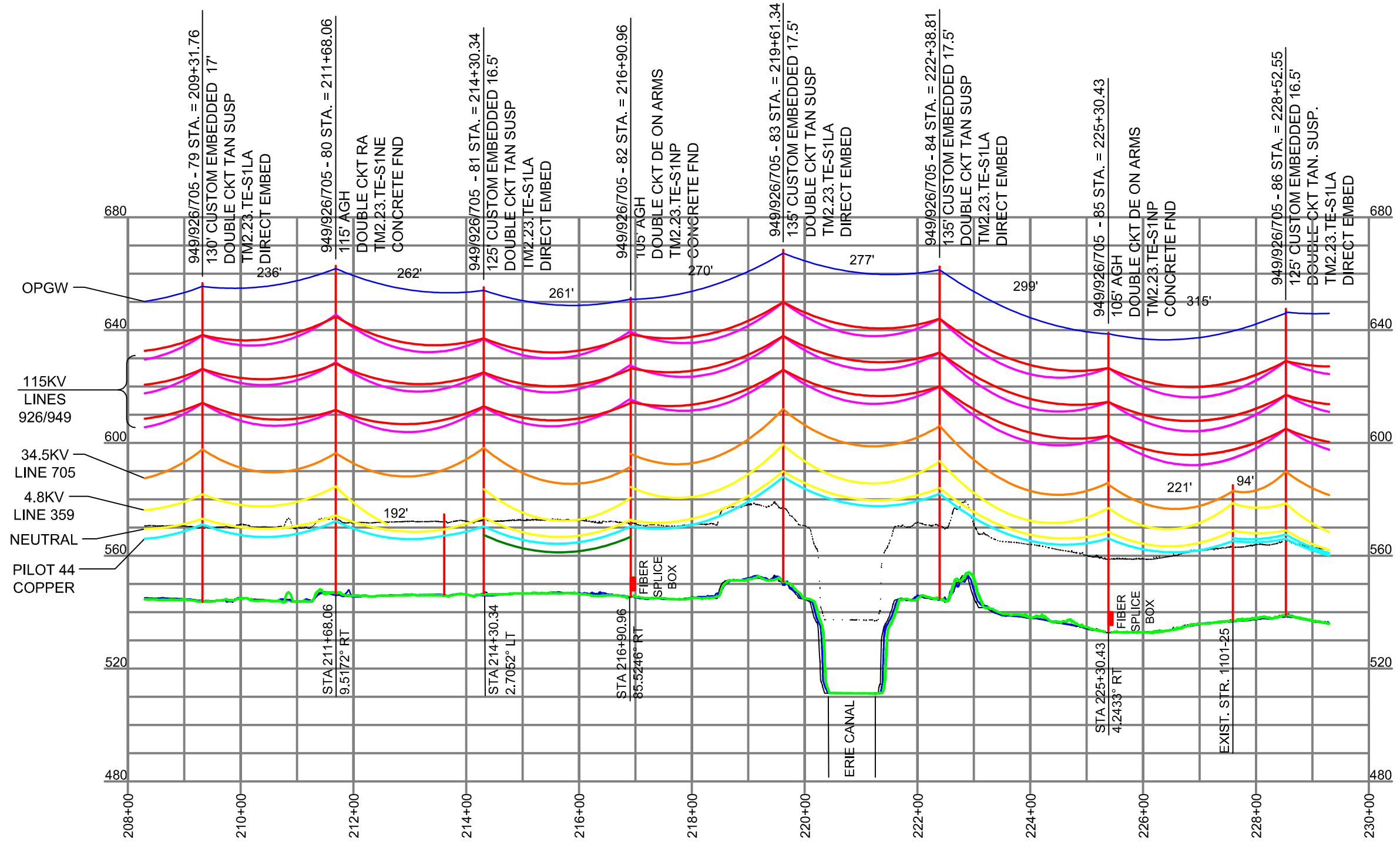
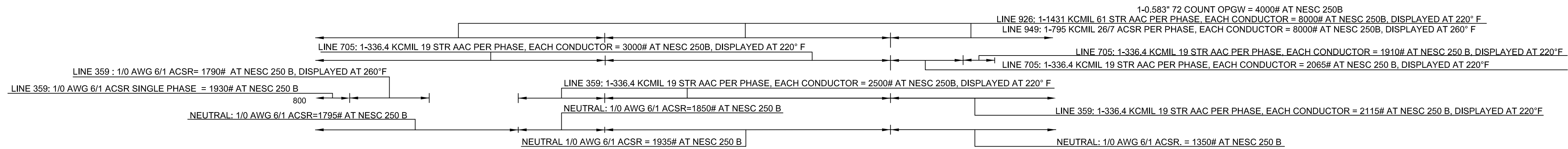
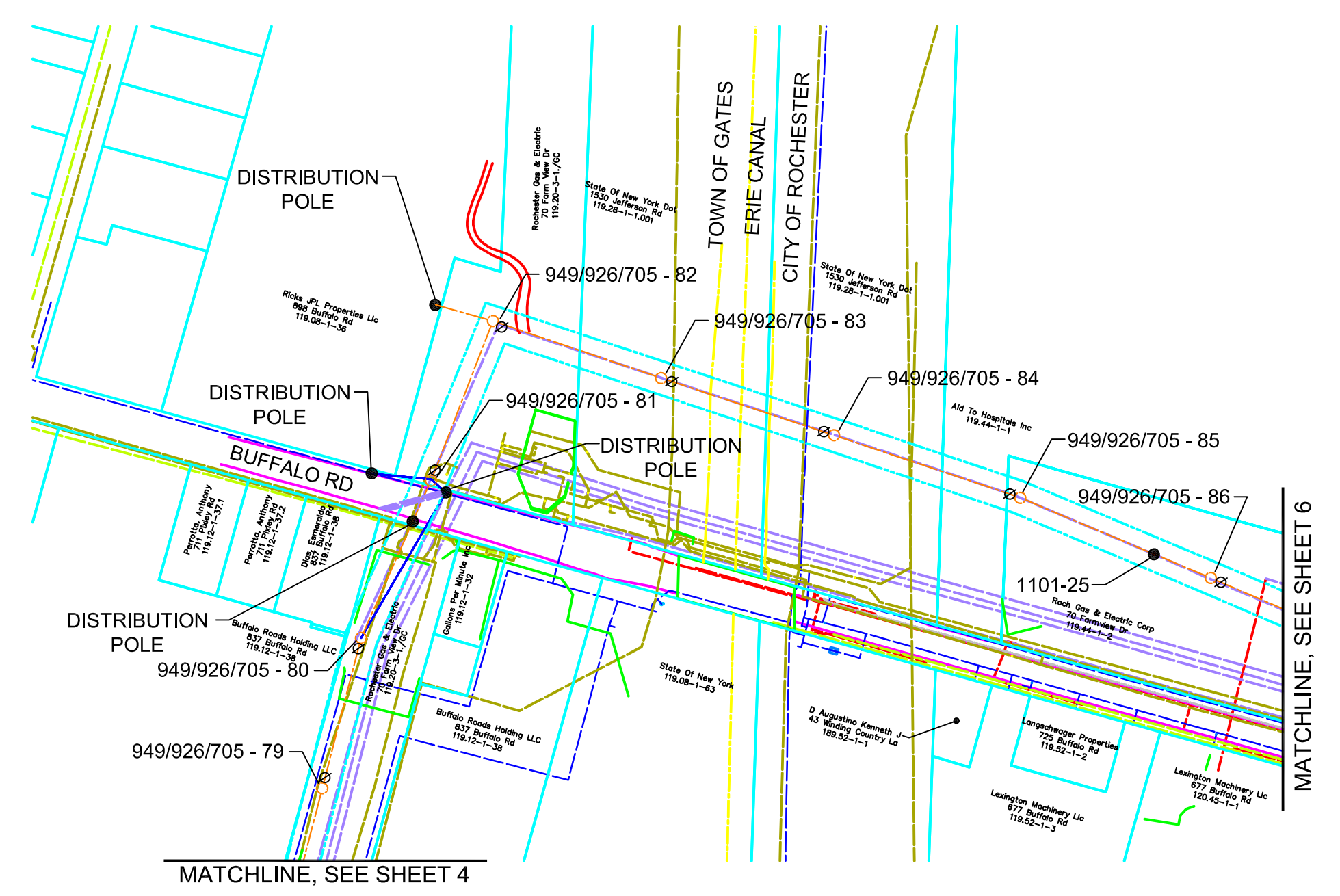
ANSI D CADD Drawing, DO NOT REVISE MANUALLY.

PLAN	SURVEYED	BY	DATE
NOTEBOOK NO.	REVIEWED ROW CHKD		

PLAN SCALE:
1" = 200'



ROCHESTER (CENTRAL) DISTRICT - WESTERN MONROE REGION



PROFILE	SURVEYED	BY	DATE
NOTEBOOK NO.	REVIEWED NOTES REDUCED		

PROFILE SCALE:
HORZ. 1" = 200'
VERT. 1" = 40'

Figure 5-1 Plan and Profile

Rochester Transmission Project Enhancement
Monroe County, NY

OHWS TYPE VARIES, SEE ABOVE	CONDUCTOR TYPE VARIES, SEE ABOVE
TENSION VARIES, SEE ABOVE	TENSION VARIES, SEE ABOVE
DESIGN TEMP. 120° F	DESIGN TEMP. VARIES, SEE ABOVE

YR. CONST.	W/O	PE Stamp		
NOTES: 1. SEE STRUCTURE LIST AND STRUCTURE FRAMING DRAWINGS FOR ALL HARDWARE ASSEMBLY INFORMATION. 2. SEE DRAWING XXX FOR FURTHER INFORMATION ON CONCRETE FOUNDATIONS.				
REV.	DATE	BY	DESCRIPTION	APP.

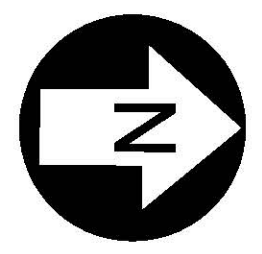
AVANGRID ENGINEERING CONFIDENTIAL, PROPRIETARY and TRADE SECRET INFORMATION Property of AVANGRID				
0-0E	10/18/19	MLEC	ISSUE FOR APPROVAL	
0-0D	9/13/19	MLEC	ISSUE FOR REVIEW	
0-0C	4/29/19	MLEC	ISSUE FOR APPROVAL	
0-0B	3/22/19	MLEC	ISSUE FOR REVIEW	
0-0A	1/2/19	MLEC	PRELIMINARY PLAN AND PROFILE	
REV.	DATE	BY	DESCRIPTION	APP.



LINE 949 PLAN AND PROFILE SHEET 5 OF 10 115kV LINE 949	
DR. ASW	SCALE AS SHOWN
CK. MSP	FILE: R0001-T949-005.DWG
APP.	NO.
DATE: 1/2/19	R0001-T949-005
	REV. 0-0E

PLAN	SURVEYED	REVIEWED	DATE
NOTEBOOK NO.	ROW CHKD		

PLAN SCALE:
1" = 200'

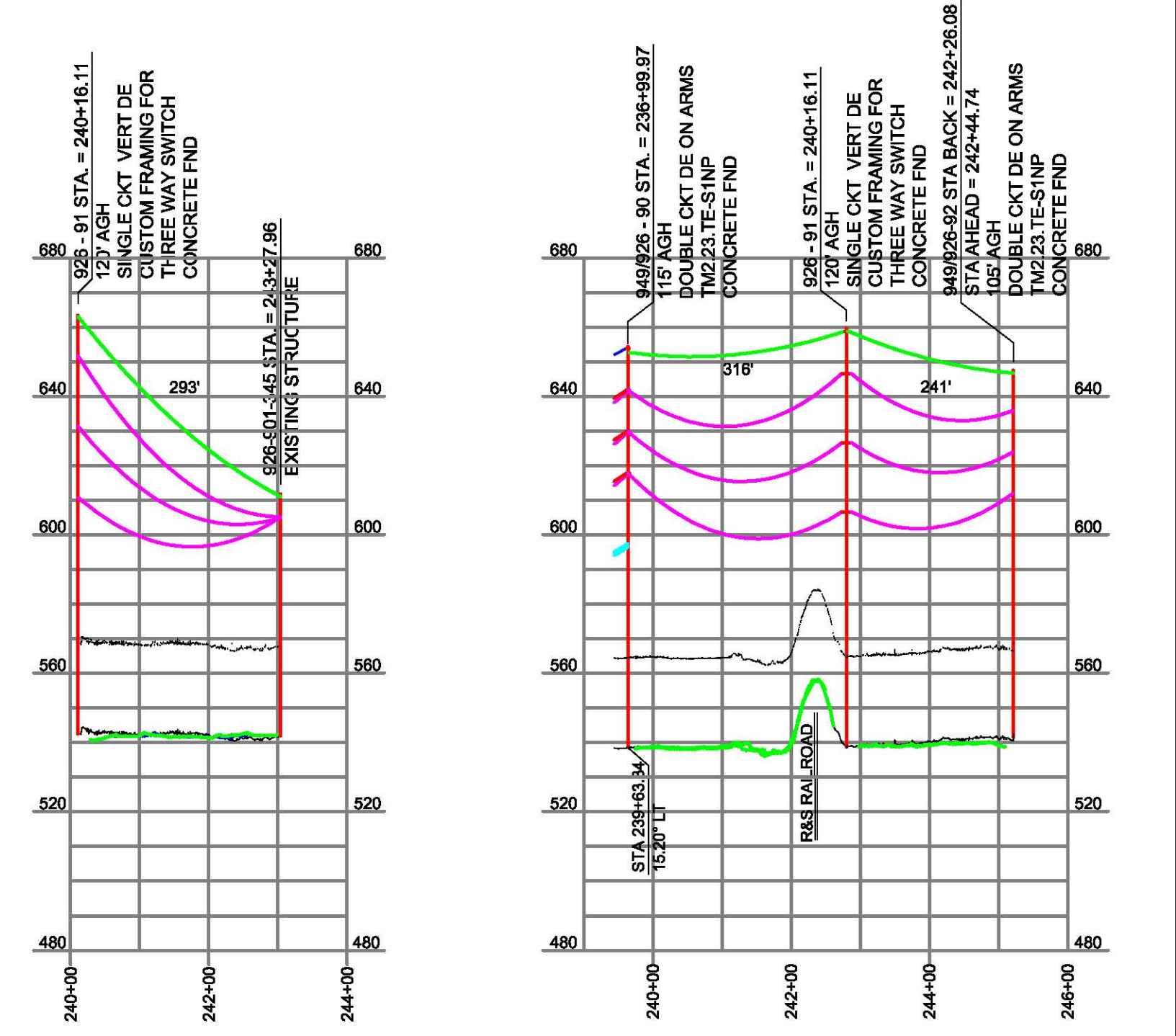
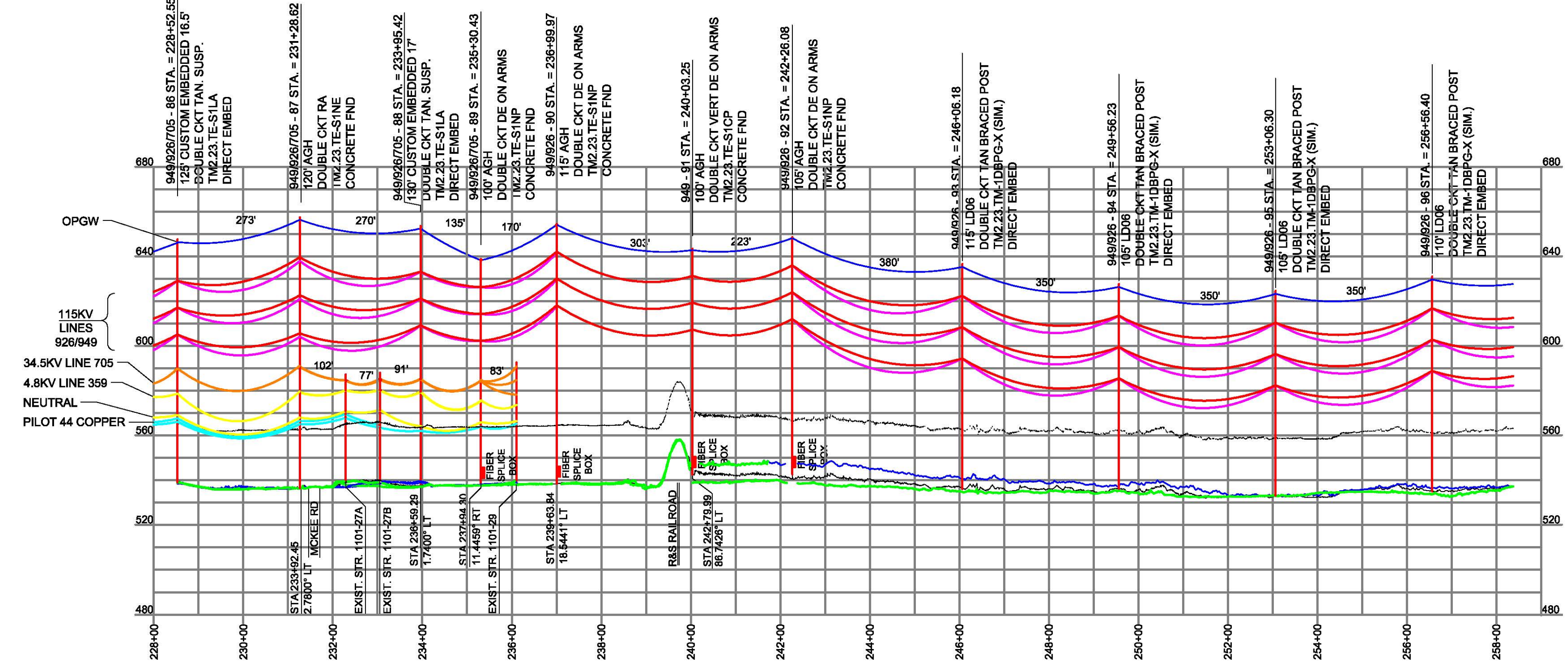
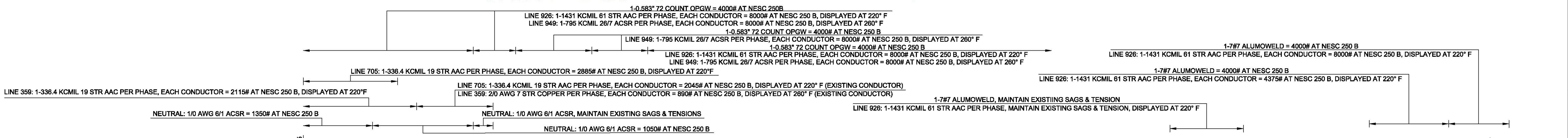
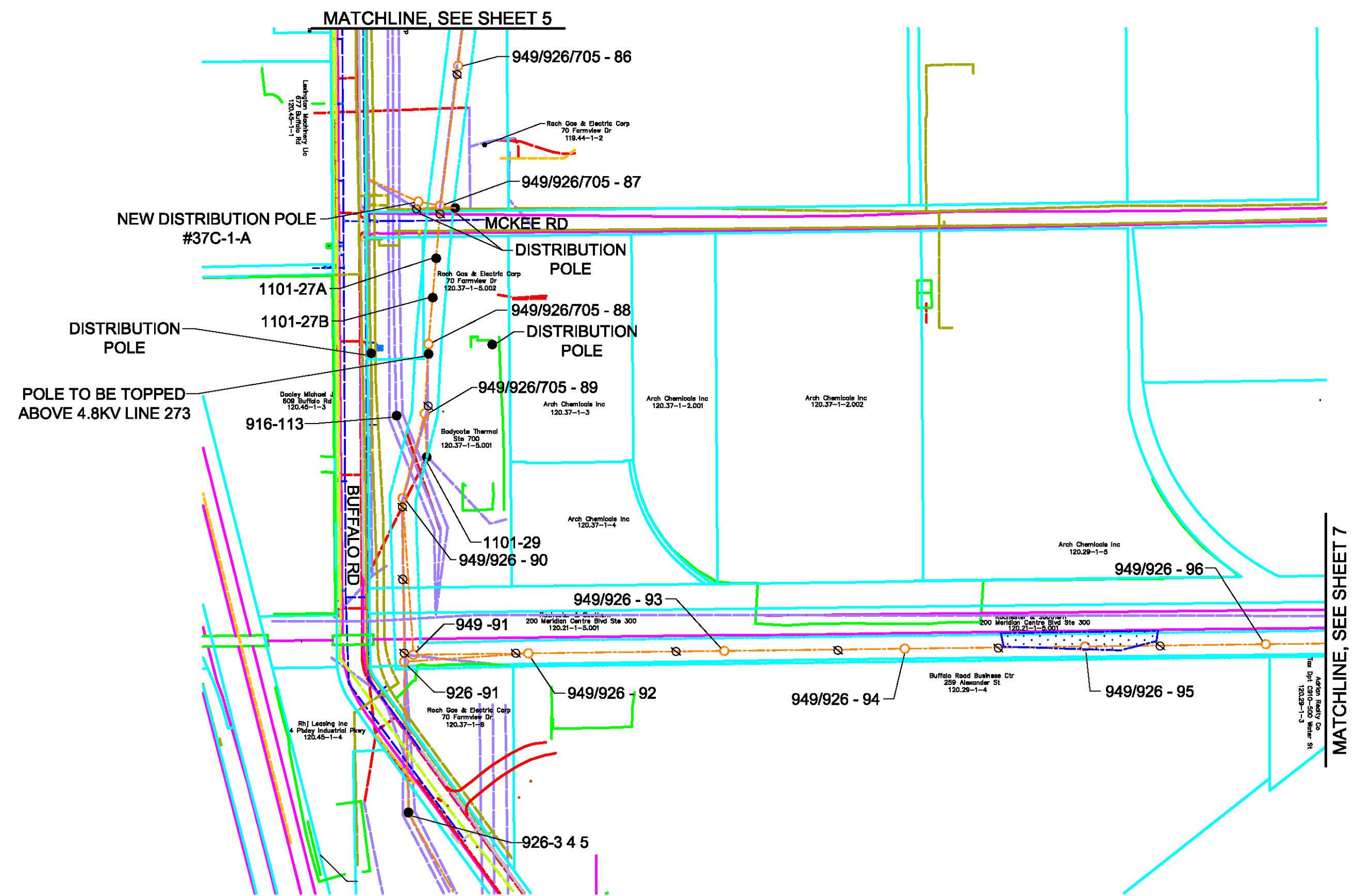


ROCHESTER (CENTRAL) DISTRICT - WESTERN MONROE REGION

This document and any attachments are considered:
BUSINESS CONFIDENTIAL
PROTECTED CRITICAL INFRASTRUCTURE INFORMATION

PROFILE	SURVEYED	REVIEWED	DATE
NOTEBOOK NO.	NOTES REDUCED		

PROFILE SCALE:
HORZ. 1" = 200'
VERT. 1" = 40'



UNDERBUILD CONSTRUCTION TYPE VARIES, SEE ABOVE	NEUTRAL CONDUCTOR TYPE VARIES, SEE ABOVE	OHSW TYPE VARIES, SEE ABOVE	CONDUCTOR TYPE VARIES, SEE ABOVE	YR. CONST. NOTES: 1. SEE STRUCTURE LIST AND STRUCTURE FRAMING DRAWINGS FOR ALL HARDWARE ASSEMBLY INFORMATION. 2. SEE DRAWING XXX FOR FURTHER INFORMATION ON CONCRETE FOUNDATIONS.	W/O	PE Stamp
TENSION VARIES, SEE ABOVE	TENSION VARIES, SEE ABOVE	TENSION VARIES, SEE ABOVE	TENSION VARIES, SEE ABOVE			
DESIGN TEMP. VARIES, SEE ABOVE	DESIGN TEMP. 120°F	DESIGN TEMP. 120°F	DESIGN TEMP. VARIES, SEE ABOVE			
REV.	DATE	BY	DESCRIPTION	APP.		

AVANGRID ENGINEERING CONFIDENTIAL, PROPRIETARY and TRADE SECRET INFORMATION Property of AVANGRID					
0-0E	10/18/19	MLEC	ISSUE FOR APPROVAL		
0-0D	9/13/19	MLEC	ISSUE FOR REVIEW		
0-0C	4/29/19	MLEC	ISSUE FOR APPROVAL		
0-0B	3/22/19	MLEC	ISSUE FOR REVIEW		
0-0A	1/2/19	MLEC	PRELIMINARY PLAN AND PROFILE		
REV.	DATE	BY	DESCRIPTION	APP.	

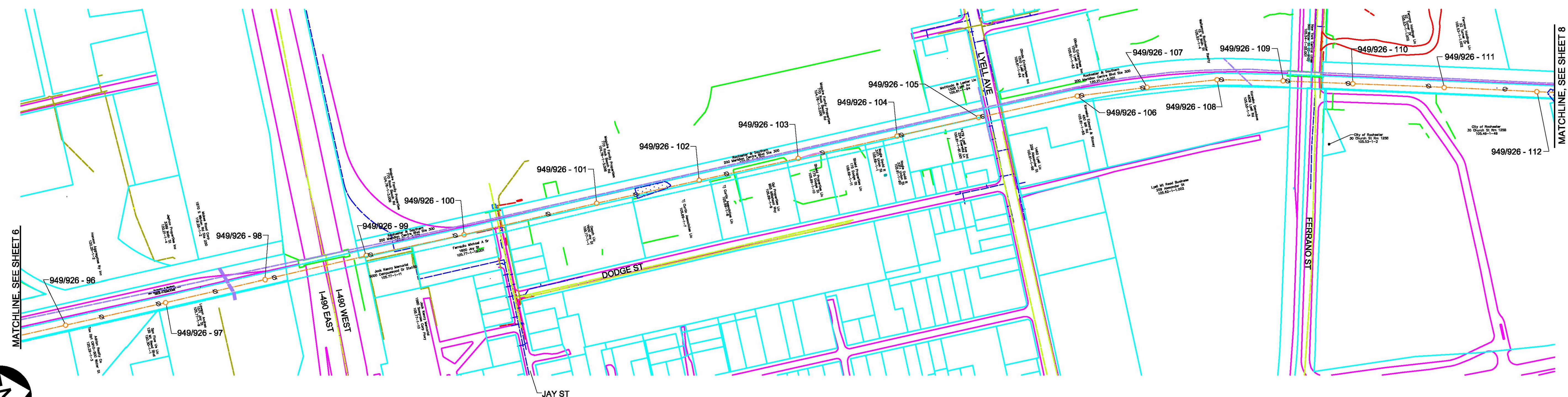
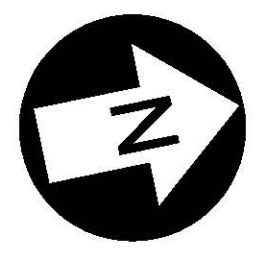
DR. ASW	SCALE AS SHOWN	FILE: R0001-T949-006.DWG	
CK. MSP	NO.		
APP.			
DATE: 1/2/19			

LINE 949
PLAN AND PROFILE
SHEET 6 OF 10
115KV LINE 949

R0001-T949-006

PLAN	SURVEYED	BY	DATE
NOTBOOK NO.	REVIEWED ROW CHKD		

PLAN SCALE:
1" = 200'

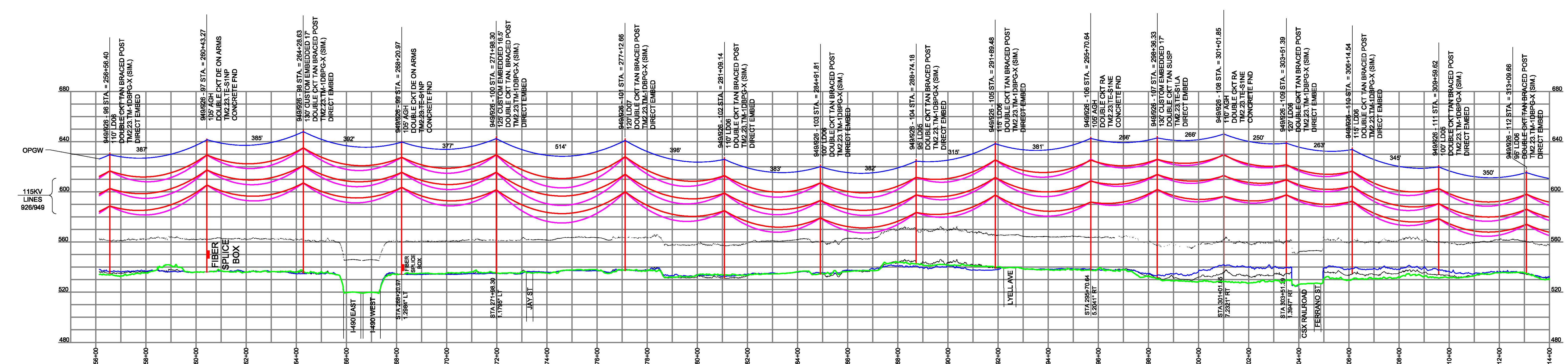


This document and any attachments are considered:
PROTECTED CRITICAL INFRASTRUCTURE INFORMATION

PROFILE	SURVEYED	BY	DATE
NOTBOOK NO.	REVIEWED NOTES REDUCED		

PROFILE SCALE:
HORZ. 1" = 200'
VERT. 1" = 40'

1-0.583* 72 COUNT OPGW = 4000# AT NESC 250B
LINE 926: 1-1431 KCMIL 61 STR AAC PER PHASE, EACH CONDUCTOR = 8000# AT NESC 250B, DISPLAYED AT 220° F
LINE 949: 1-795 KCMIL 26/7 ACSR PER PHASE, EACH CONDUCTOR = 8000# AT NESC 250B, DISPLAYED AT 260° F



UNDERBUILD CONSTRUCTION TYPE	NEUTRAL CONDUCTOR TYPE	OHSW TYPE	CONDUCTOR TYPE
TENSION	TENSION	0.583* 72 COUNT OPGW	VARIES, SEE ABOVE
DESIGN TEMP.	DESIGN TEMP.	120°F	VARIES, SEE ABOVE

YR. CONST.	W/O	PE Stamp		
NOTES:				
1. SEE STRUCTURE LIST AND STRUCTURE FRAMING DRAWINGS FOR ALL HARDWARE ASSEMBLY INFORMATION.				
2. SEE DRAWING XXX FOR FURTHER INFORMATION ON CONCRETE FOUNDATIONS.				
REV.	DATE	BY	DESCRIPTION	APP.

AVANGRID ENGINEERING CONFIDENTIAL, PROPRIETARY and TRADE SECRET INFORMATION Property of AVANGRID				
0-0E	10/18/19	MLEC	ISSUE FOR APPROVAL	
0-0D	9/13/19	MLEC	ISSUE FOR REVIEW	
0-0C	4/29/19	MLEC	ISSUE FOR APPROVAL	
0-0B	3/22/19	MLEC	ISSUE FOR REVIEW	
0-0A	1/2/19	MLEC	PRELIMINARY PLAN AND PROFILE	
REV.	DATE	BY	DESCRIPTION	APP.

LINE 949
PLAN AND PROFILE
SHEET 7 OF 10
115KV LINE 949

DR. ASW
CK. MSP
APP. [Signature]
DATE: 1/2/19

SCALE AS SHOWN
FILE: R0001-T949-007.DWG
NO. **R0001-T949-007**

REV. **0-0E**

CADD Drawings DO NOT REVISE MANUALLY.

PLAN	SURVEYED	BY	DATE
NOTEBOOK NO.	REVIEWED		
	ROW CHKD		

PLAN SCALE: 1" = 200'

ROCHESTER (CENTRAL) DISTRICT - WESTERN MONROE REGION

PROFILE	SURVEYED	BY	DATE
NOTEBOOK NO.	REVIEWED		
	NOTES REDUCED		

PROFILE SCALE: HORIZ. 1" = 200' VERT. 1" = 40'

This document and any attachments are considered: **PROTECTED CRITICAL INFRASTRUCTURE INFORMATION**

Figure 5-1 Plan and Profile

Rochester Transmission Project Enhancement
Monroe County, NY

OHSW TYPE	VARIES, SEE ABOVE	CONDUCTOR TYPE	VARIES, SEE ABOVE	YR. CONST.	W/O	PE Stamp
TENSION	VARIES, SEE ABOVE	TENSION	VARIES, SEE ABOVE	NOTES:		
DESIGN TEMP.	120°F	DESIGN TEMP.	VARIES, SEE ABOVE	1. SEE STRUCTURE LIST AND STRUCTURE FRAMING DRAWINGS FOR ALL HARDWARE ASSEMBLY INFORMATION.		
				2. SEE DRAWING XXX FOR FURTHER INFORMATION ON CONCRETE FOUNDATIONS.		
REV.	DATE	BY		DESCRIPTION	APP.	

REV.	DATE	BY	DESCRIPTION	APP.
------	------	----	-------------	------

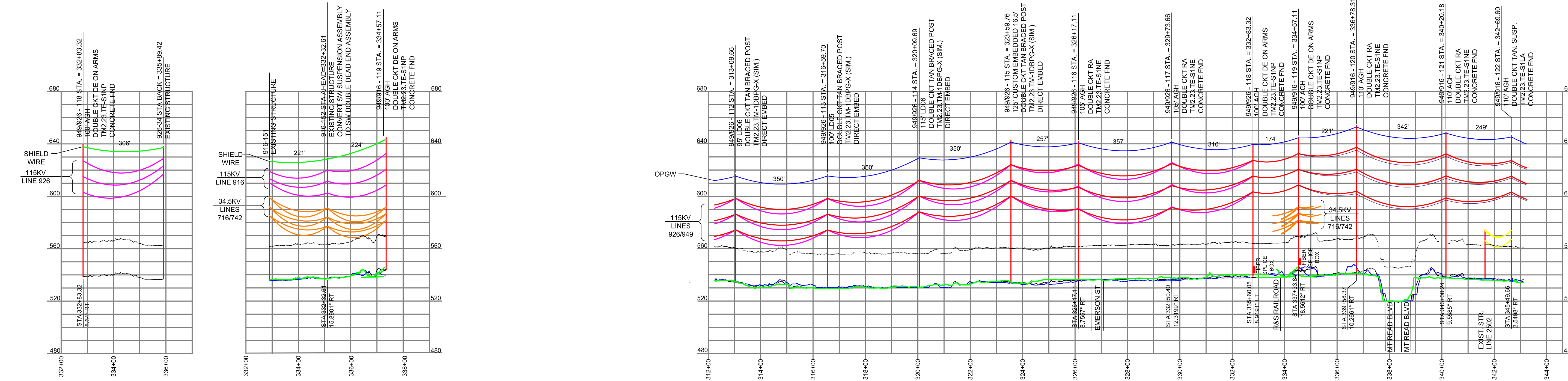
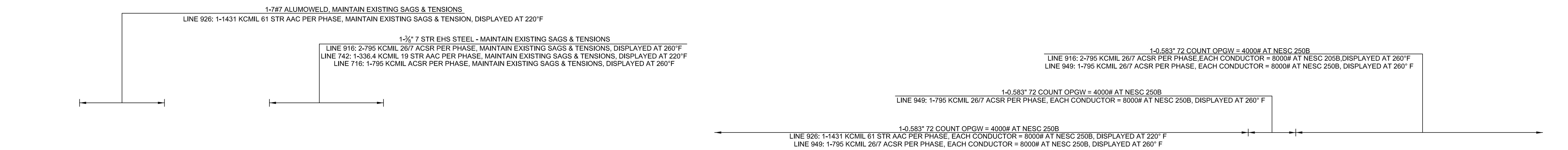
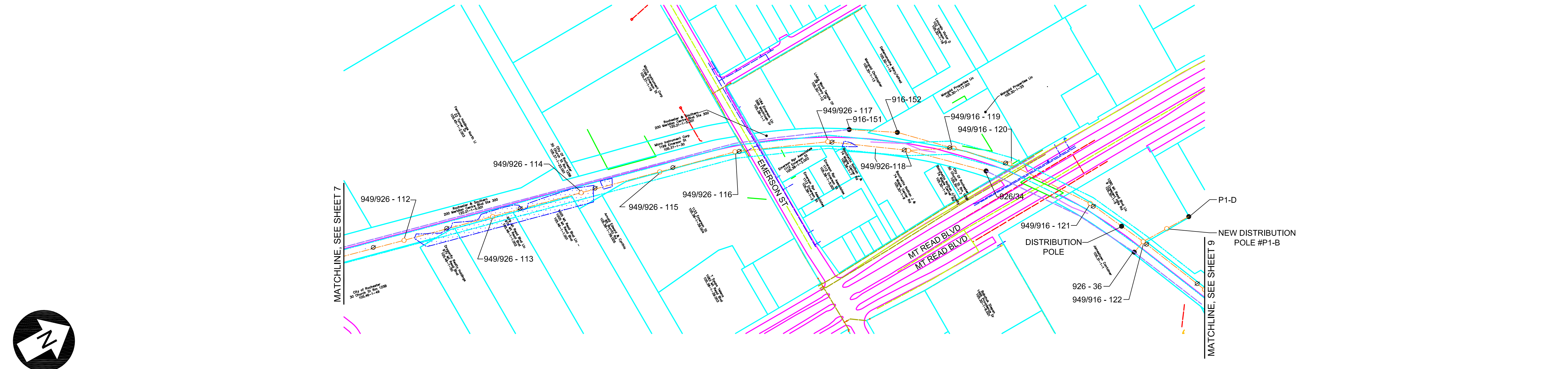
REV.	DATE	BY	DESCRIPTION	APP.
------	------	----	-------------	------

AVANGRID ENGINEERING				
CONFIDENTIAL, PROPRIETARY and TRADE SECRET INFORMATION				
Property of AVANGRID				
0-0E	10/18/19	MLEC	ISSUE FOR APPROVAL	
0-0D	9/13/19	MLEC	ISSUE FOR REVIEW	
0-0C	4/29/19	MLEC	ISSUE FOR APPROVAL	
0-0B	3/22/19	MLEC	ISSUE FOR REVIEW	
0-0A	1/2/19	MLEC	PRELIMINARY PLAN AND PROFILE	
REV.	DATE	BY	DESCRIPTION	APP.

RG&E AVANGRID	
DR.	ASW
CK.	MSP
APP.	
DATE:	1/2/19

SCALE:	AS SHOWN
FILE:	R0001-T949-008.DWG
NO.	

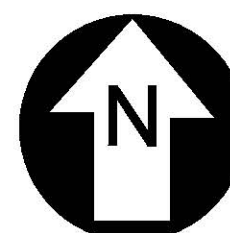
LINE 949 PLAN AND PROFILE	
SHEET 8 OF 10	
115KV LINE 949	
R0001-T949-008	REV. 0-0E



ANSI D CADD Drawing, DO NOT REVISE MANUALLY.

PLAN	SURVEYED	BY	DATE
NOTEBOOK NO.	REVIEWED		
	ROW CHKD		

PLAN SCALE:
1" = 200'

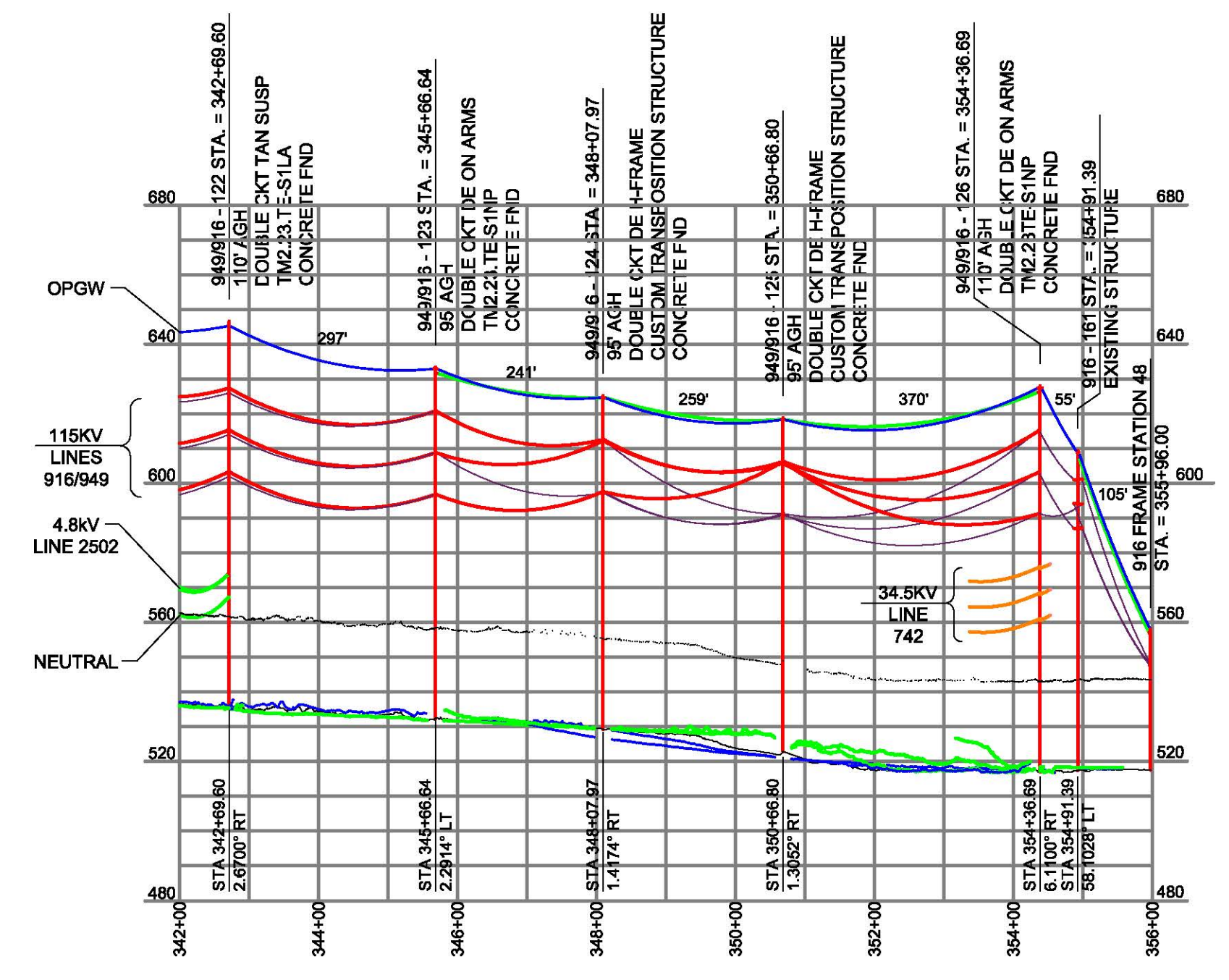
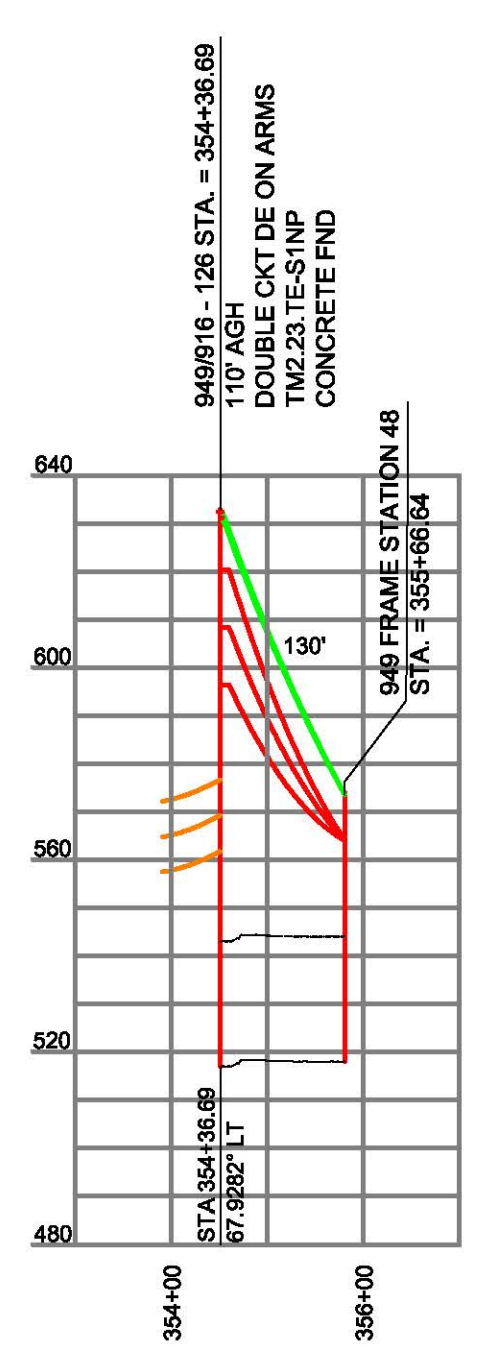
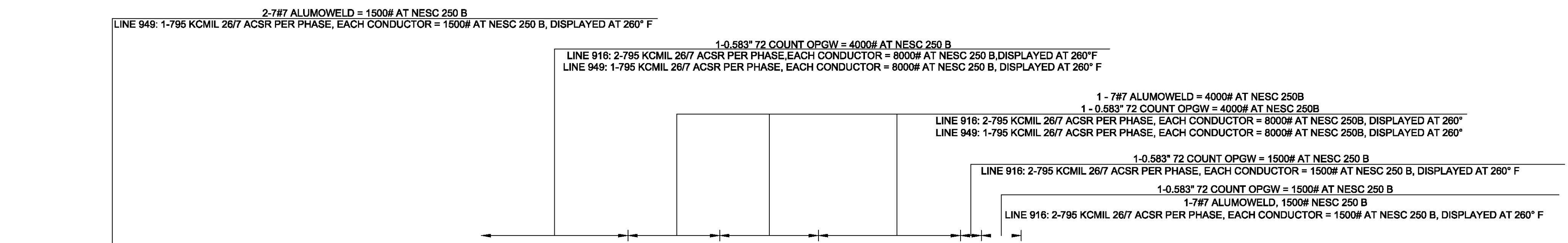
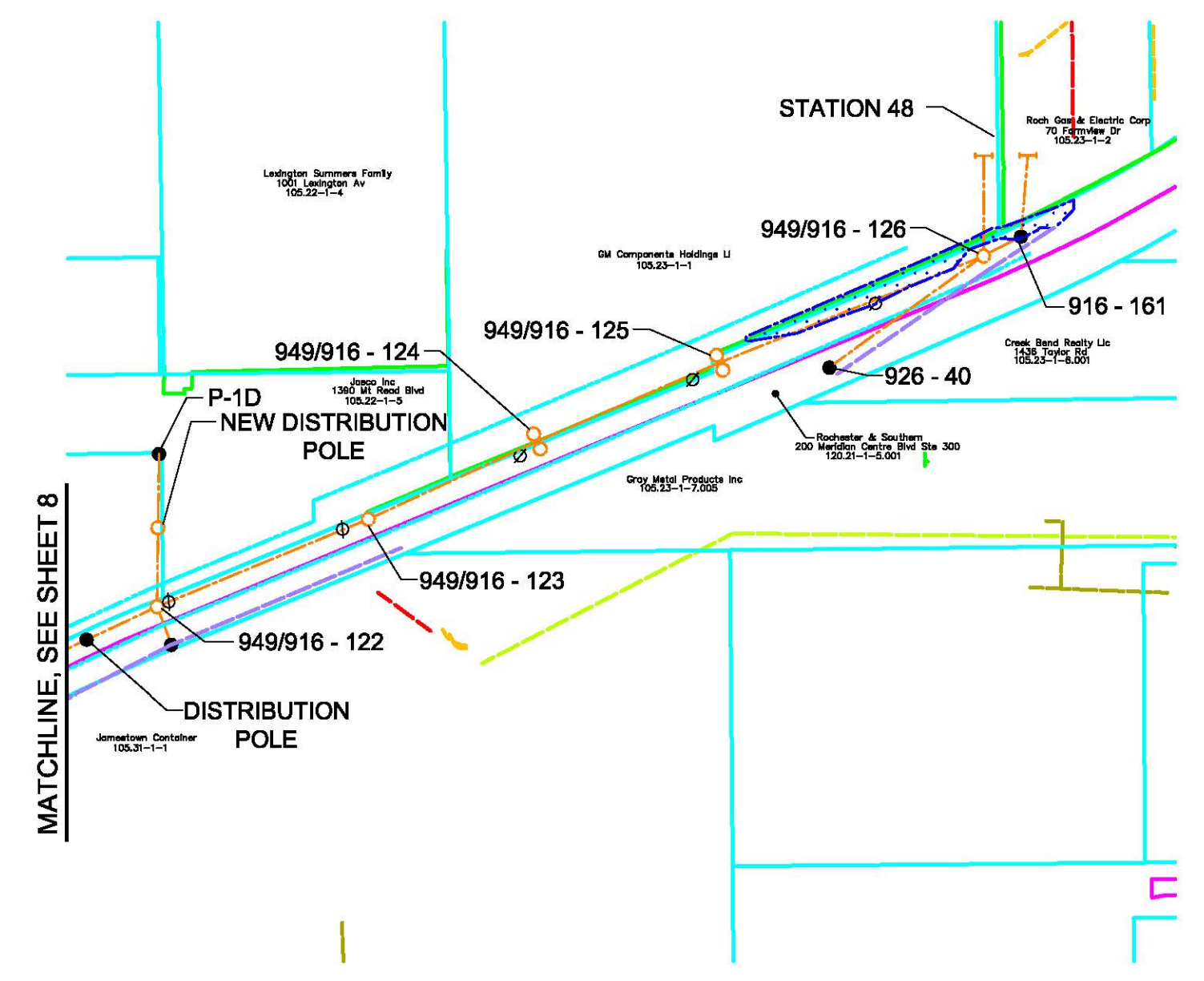


ROCHESTER (CENTRAL) DISTRICT - WESTERN MONROE REGION

PROFILE	SURVEYED	BY	DATE
NOTEBOOK NO.	REVIEWED		
	NOTES REDUCED		

PROFILE SCALE:
HORZ. 1" = 200'
VERT. 1" = 40'

This document and any attachments are considered:
BUSINESS CONFIDENTIAL
PROTECTED CRITICAL INFRASTRUCTURE INFORMATION

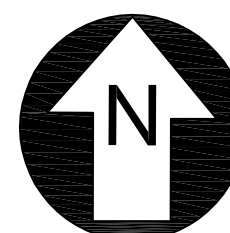


UNDERBUILD CONSTRUCTION TYPE	NEUTRAL CONDUCTOR TYPE	OHSW TYPE VARIES, SEE ABOVE	CONDUCTOR TYPE VARIES, SEE ABOVE	YR. CONST.	W/O	PE Stamp	AVANGRID ENGINEERING CONFIDENTIAL, PROPRIETARY and TRADE SECRET INFORMATION Property of AVANGRID			LINE 949 PLAN AND PROFILE SHEET 9 OF 10 115KV LINE 949		DR. ASW CK. MSP APP.	SCALE AS SHOWN	FILE: R0001-T949-008.DWG	NO. R0001-T949-009	REV. 0-0E
TENSION	TENSION	TENSION VARIES, SEE ABOVE	TENSION VARIES, SEE ABOVE				0-0E 10/18/19 MLEC ISSUE FOR APPROVAL 0-0D 9/13/19 MLEC ISSUE FOR REVIEW 0-0C 4/29/19 MLEC ISSUE FOR APPROVAL 0-0B 3/22/19 MLEC ISSUE FOR REVIEW 0-0A 1/2/19 MLEC PRELIMINARY PLAN AND PROFILE	DATE: 1/2/19								
DESIGN TEMP.	DESIGN TEMP.	DESIGN TEMP. 120°F	DESIGN TEMP. 260°F	REV.	DATE	BY	DESCRIPTION	APP.								

ANSI D... CADD Drawing, DO NOT REVISE MANUALLY.

PLAN	SURVEYED	BY	DATE
NOTEBOOK NO.	REVIEWED ROW CHKD		

PLAN SCALE:
1" = 200'

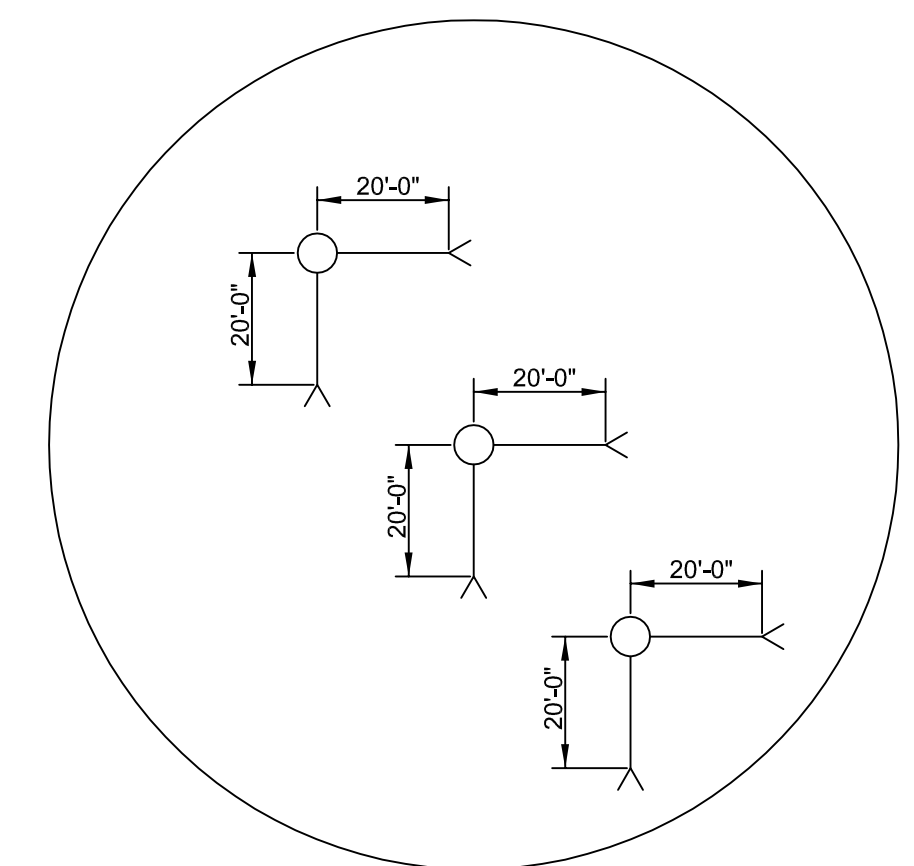
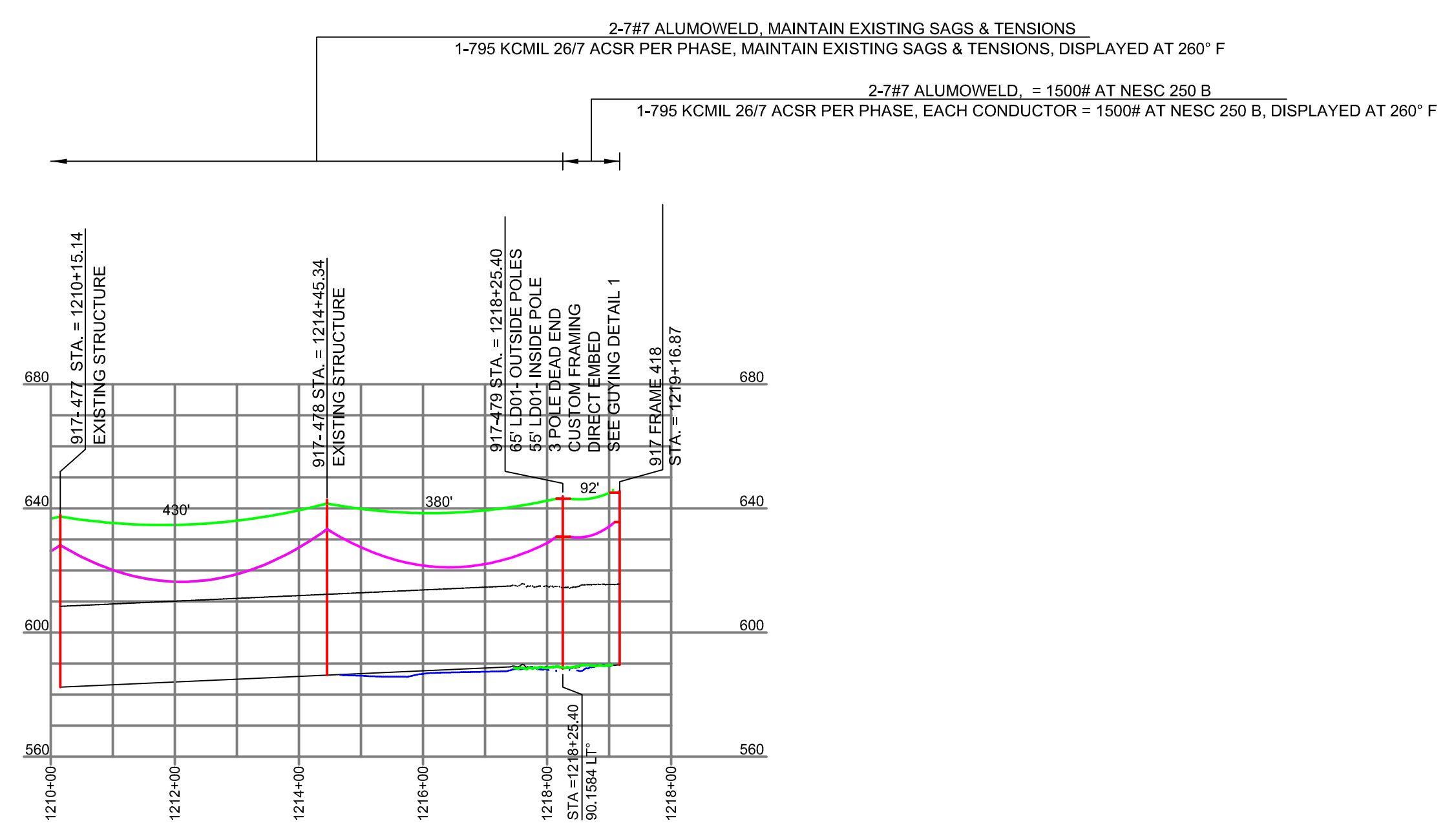
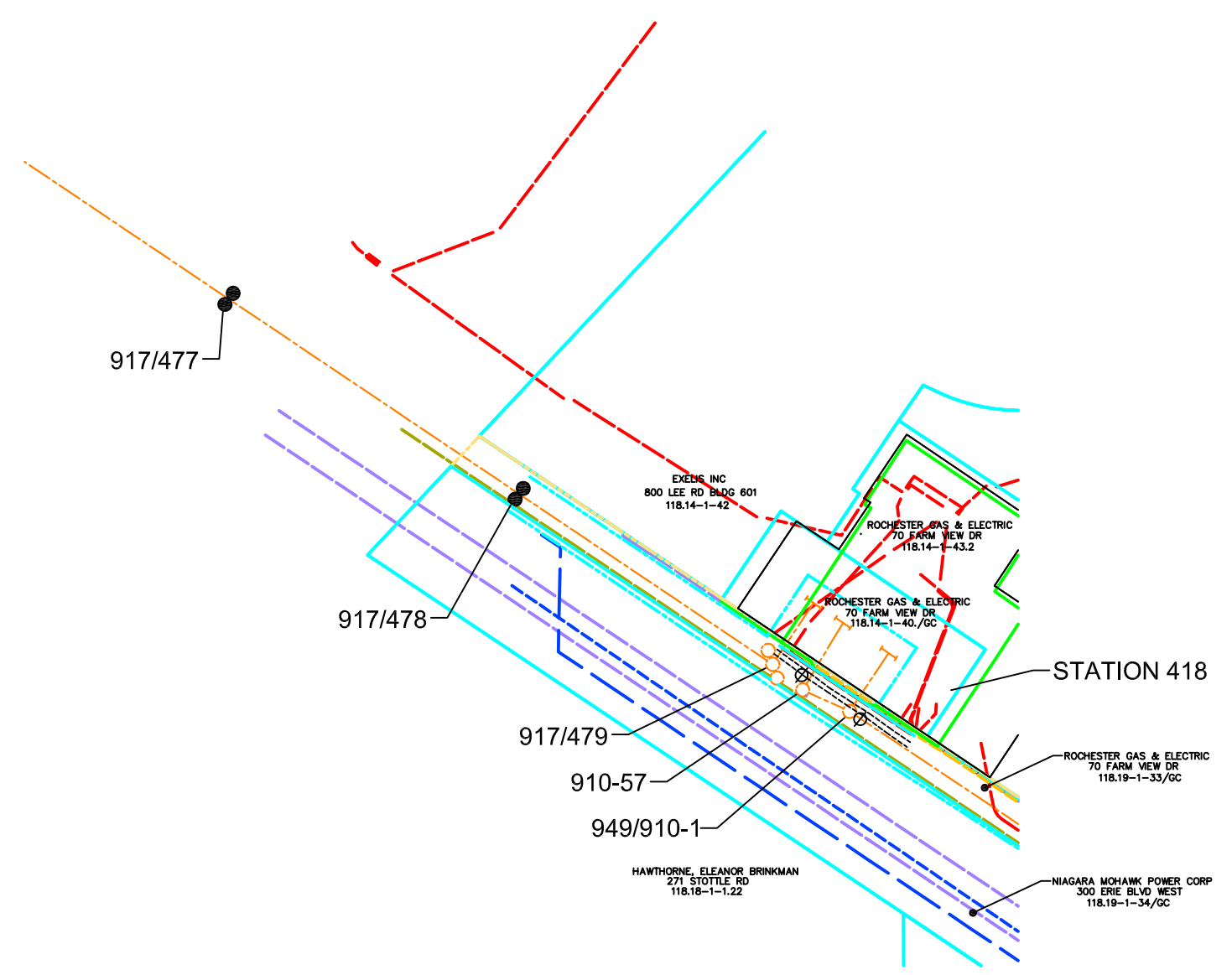


PROFILE	SURVEYED	BY	DATE
NOTEBOOK NO.	REVIEWED NOTES REDUCED		

PROFILE SCALE:
HORZ. 1" = 200'
VERT. 1" = 40'

ROCHESTER (CENTRAL) DISTRICT - WESTERN MONROE REGION

This document and any attachments are considered:
BUSINESS CONFIDENTIAL
PROTECTED CRITICAL INFRASTRUCTURE INFORMATION



GUYING DETAIL 1 - STRUCTURE 917-479
SCALE: N.T.S.

Figure 5-1 Plan and Profile

Rochester Transmission Project Enhancement
Monroe County, NY

OHSW TYPE VARIES, SEE ABOVE	CONDUCTOR TYPE VARIES, SEE ABOVE	YR. CONST.	W/O	PE Stamp
TENSION VARIES, SEE ABOVE	TENSION VARIES, SEE ABOVE	NOTES: 1. SEE STRUCTURE LIST AND STRUCTURE FRAMING DRAWINGS FOR ALL HARDWARE ASSEMBLY INFORMATION. 2. SEE DRAWING XXX FOR FURTHER INFORMATION ON CONCRETE FOUNDATIONS.		
DESIGN TEMP. 120°F	DESIGN TEMP. 260°F	REV.	DATE	BY
			DESCRIPTION	APP.

AVANGRID ENGINEERING CONFIDENTIAL, PROPRIETARY and TRADE SECRET INFORMATION Property of AVANGRID				
0-0E	10/18/19	MLEC	ISSUE FOR APPROVAL	
0-0D	9/13/19	MLEC	ISSUE FOR REVIEW	
0-0C	4/29/19	MLEC	ISSUE FOR APPROVAL	
0-0B	3/22/19	MLEC	ISSUE FOR REVIEW	
0-0A	1/2/19	MLEC	PRELIMINARY PLAN AND PROFILE	
REV.	DATE	BY	DESCRIPTION	APP.

LINE 949 PLAN AND PROFILE SHEET 10 OF 10 115kV LINE 949			
DR.	ASW	SCALE	AS SHOWN
CK.	MSP	FILE:	R0001-T949-010.DWG
APP.		NO.	R0001-T949-010
DATE:	1/2/19	REV.	0-0E